

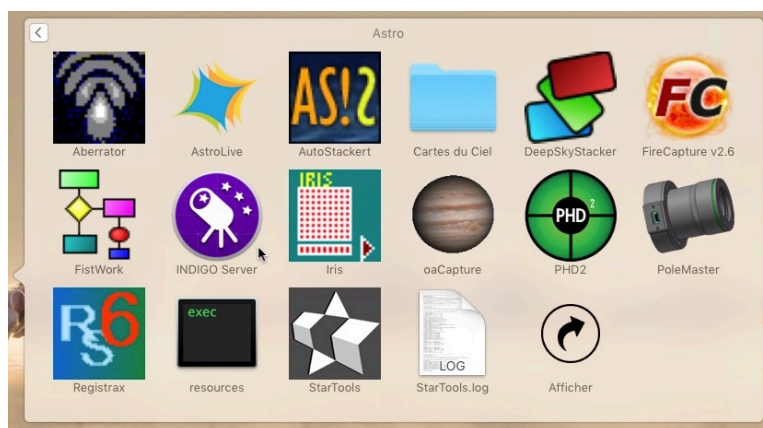
Setup with the TiTaN TCS on Mac OSX

INDI Installation

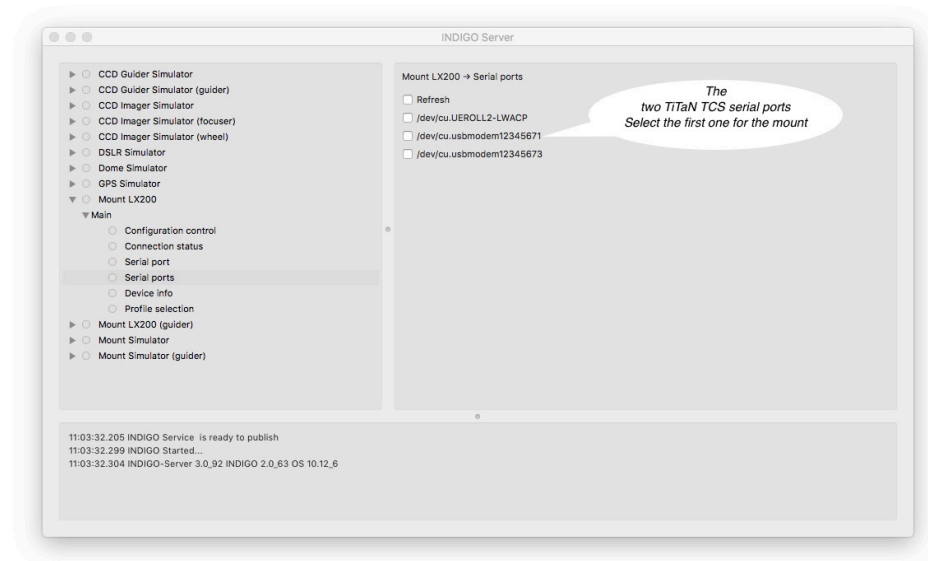
- Install INDI Library on your Mac : <http://indilib.org/>
- Do the setup to enable:
 - Mount LX200
 - Mount LX200 (guider)

INDI USB Setup

- Connect the TitaN TCS with the USB cable to the computer
- Power on the TitaN TCS
- Launch the INDI Server

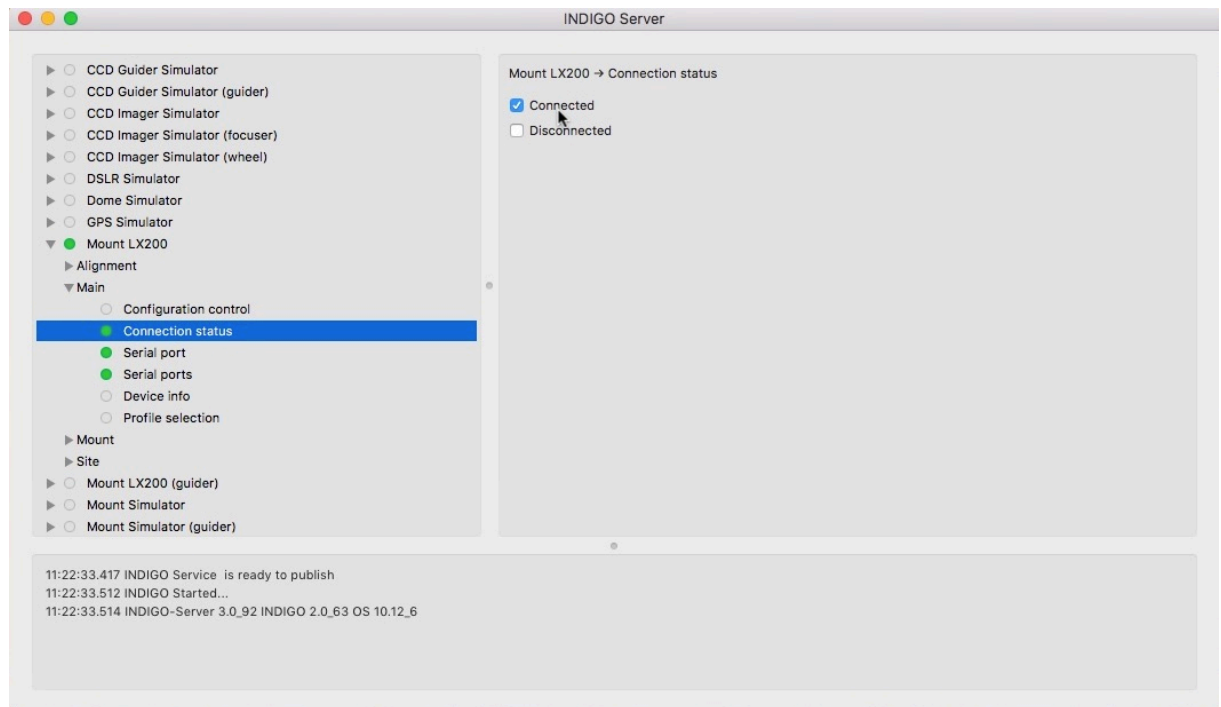


- Open the Mount LX200 section
- Then open Serial Ports section
- The two usb/serial ports of the TiTaN TCS are displayed.
- Select the first one. The second can be used for Mount LX200 (guider) section.



➔ The serial port sections must switch to **green** lights

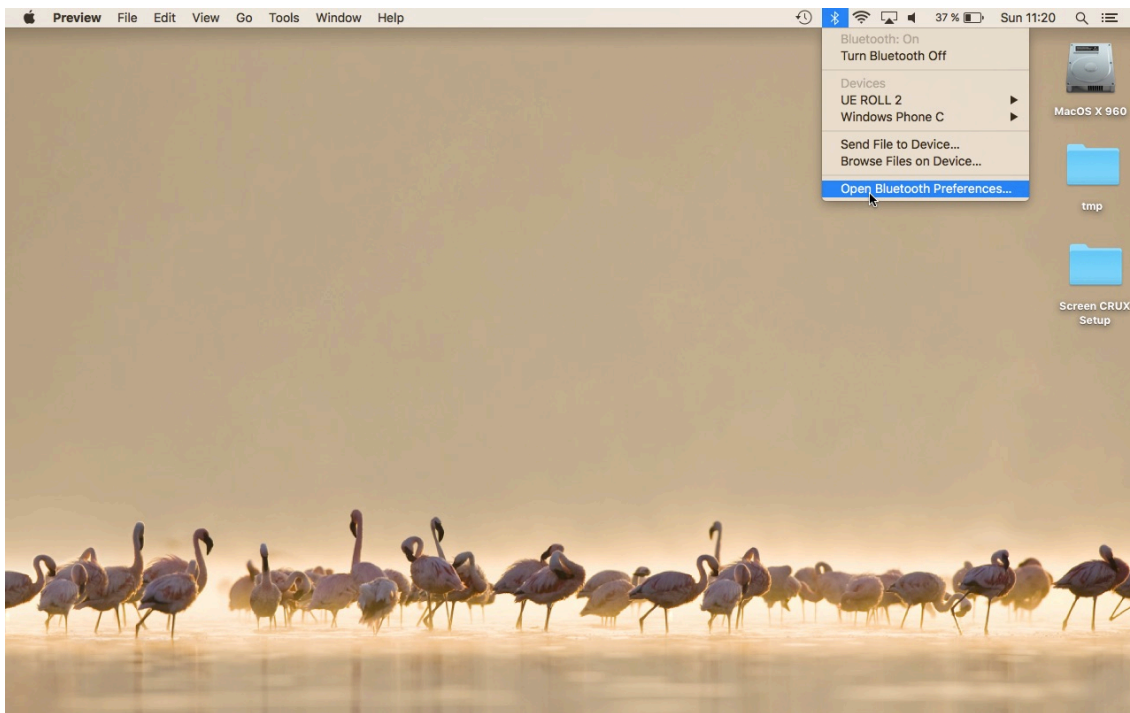
- Activate the connection between the TitaN TCS and the INDI Server
- Reduce the window



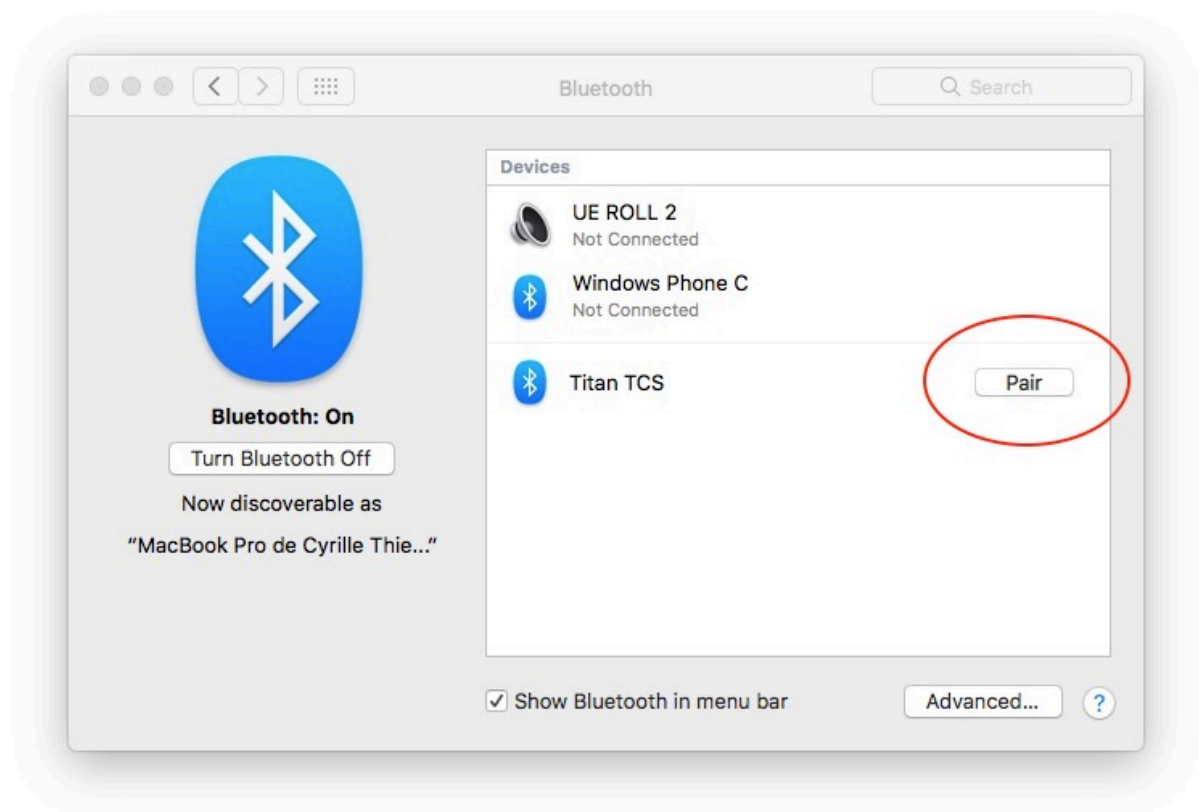
➔ **Beware : If you close the window then you will switch off the server and you will lost the connection.**

INDI Bluetooth Setup

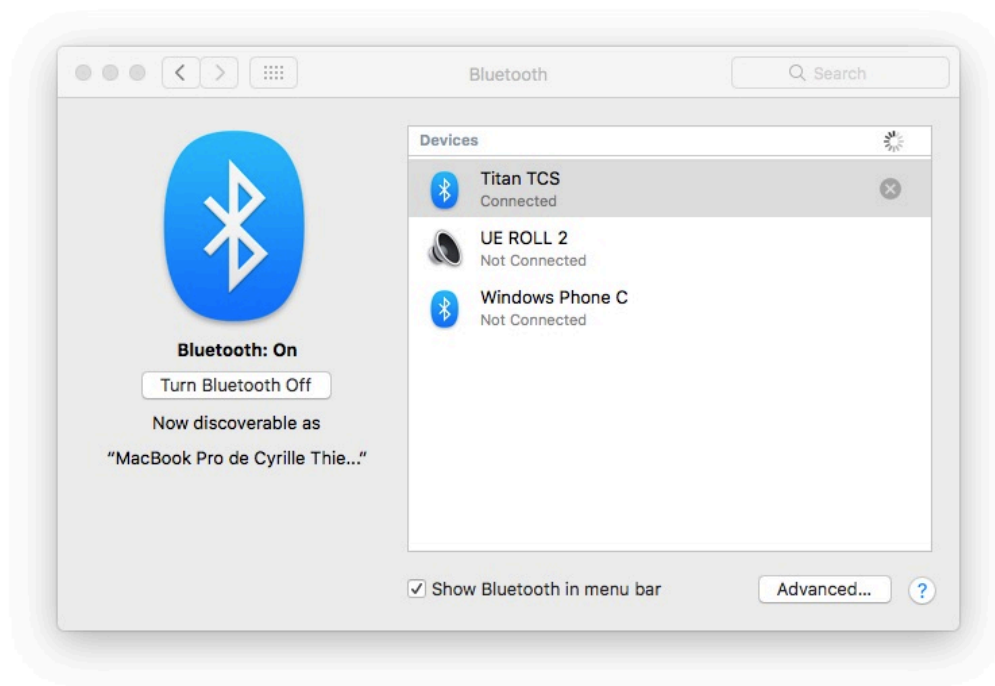
- Open Bluetooth preference to enable the discovery process



- Power on the TiTaN TCS
- Titan TCS will appear shortly in the list as a new device

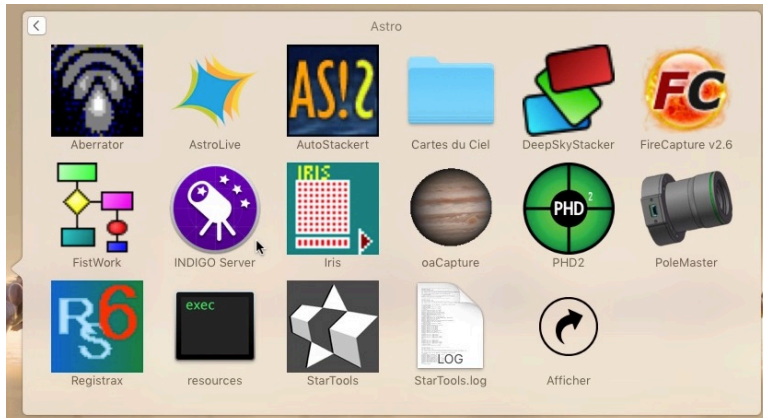


- Pair the TiTaN TCS to your computer

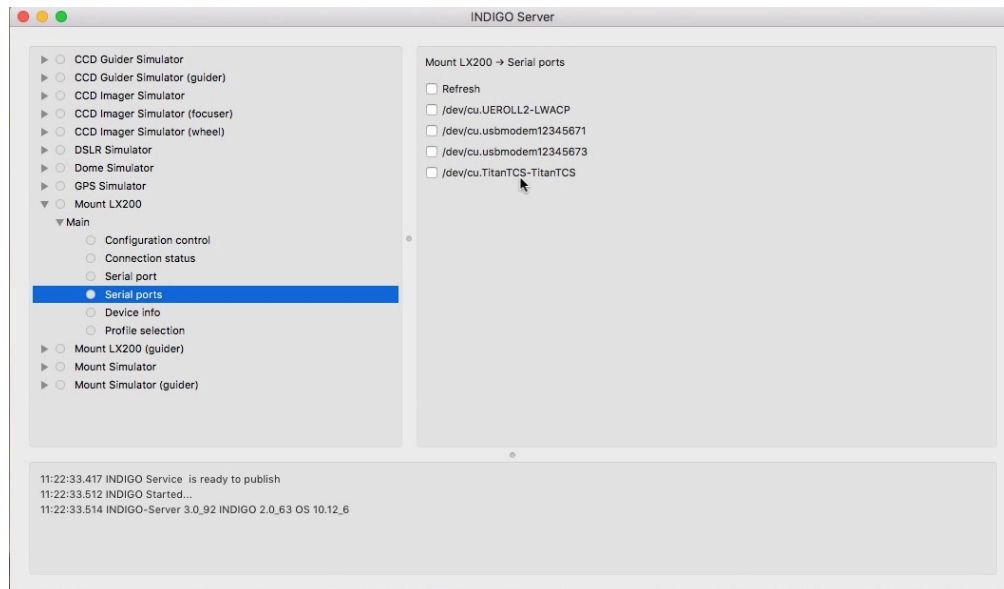


Remark: This part of the setup has to be done only one time.

- Launch the INDI Server

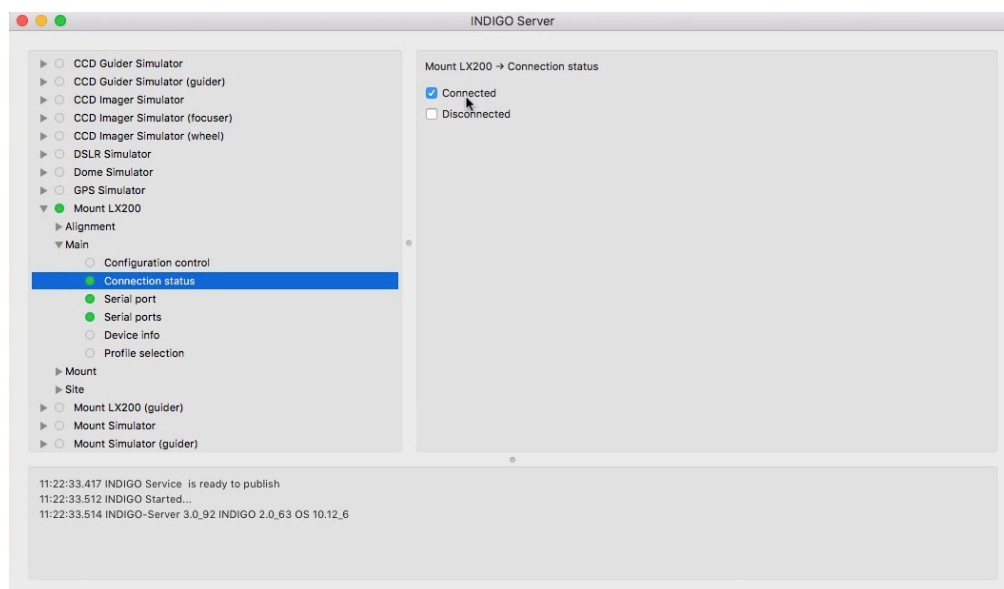


- Open the Mount LX200 section
- Then open Serial Ports section
- The two usb/serial ports of the TiTaN TCS are displayed.
- Select Bluetooth serial port



Remark: In this screen the USB cable is available too.

- Then the serial port section must switch to green lights

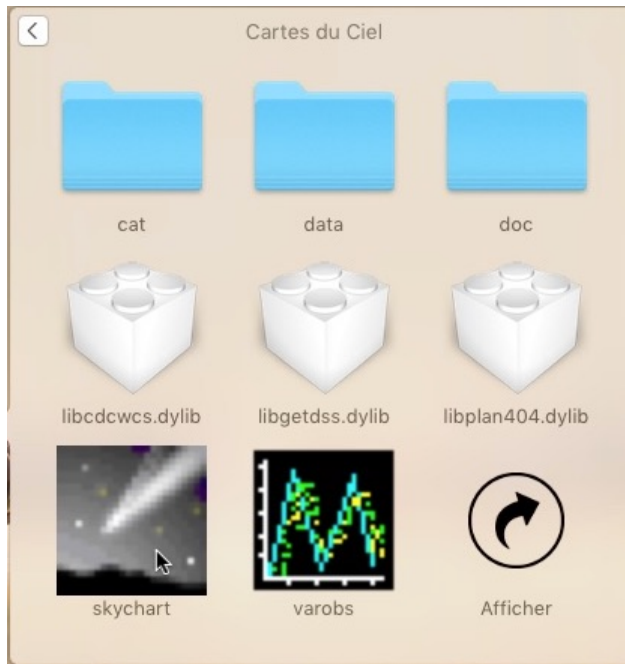


- Activate the connection between the TitaN TCS and the INDI Server
- Reduce the window

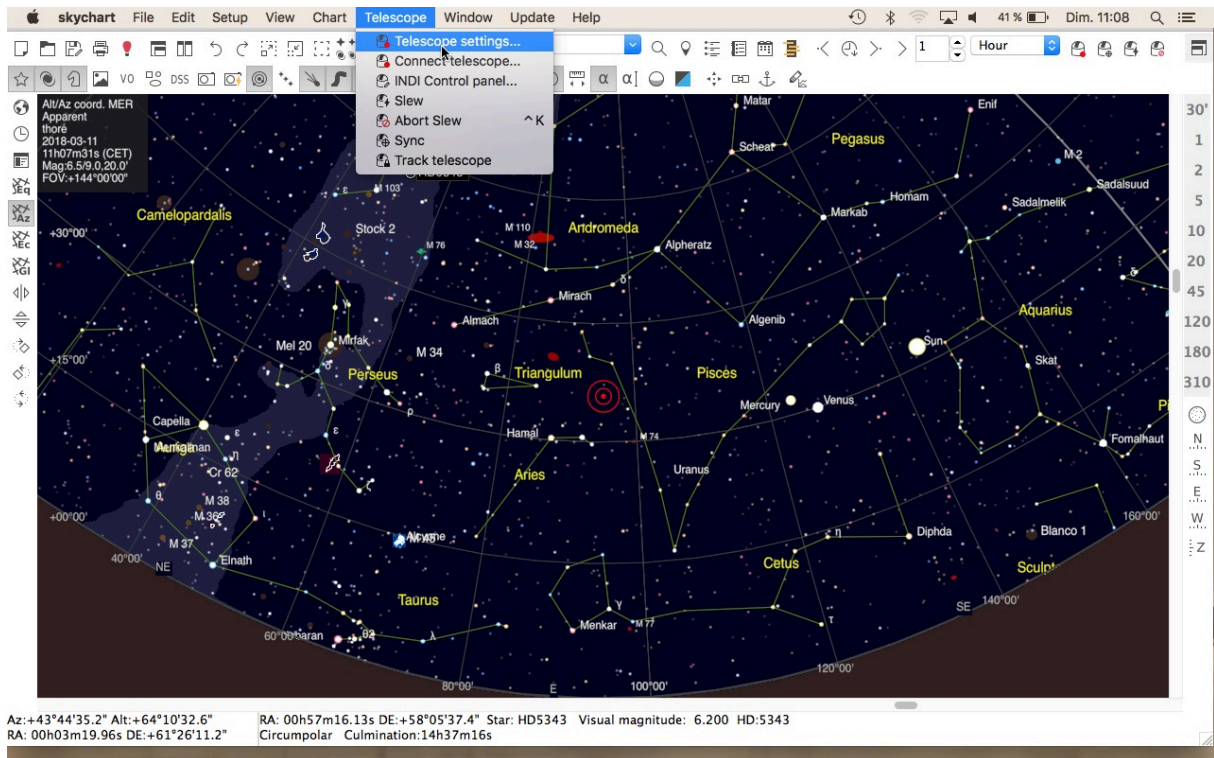
Beware : If you close the window then you will switch off the server and you will lost the connection.

Use INDI into your software

- Open your software – (here Skychart <https://www.ap-i.net/skychart/en/start>)



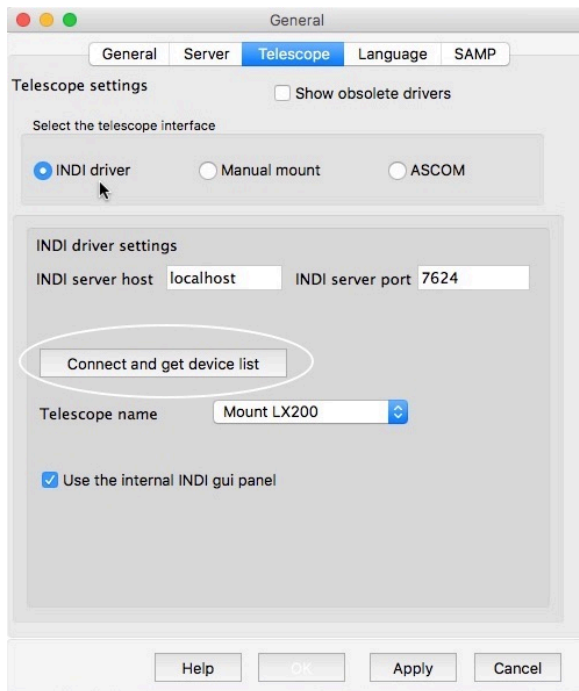
- Open Telescope Settings



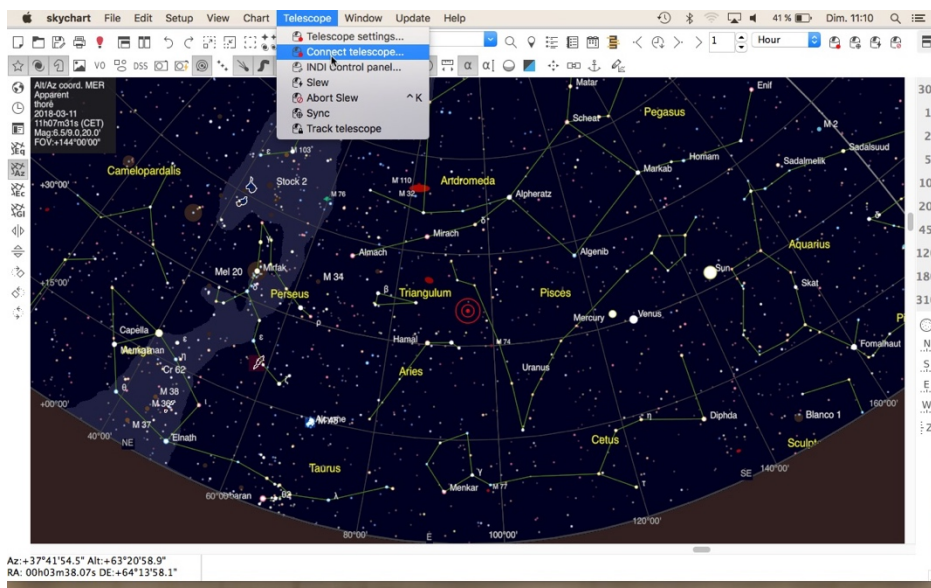
- Select “INDI driver”
- Click on “Connect and Get device list”

➔ Mount LX200 will be displayed

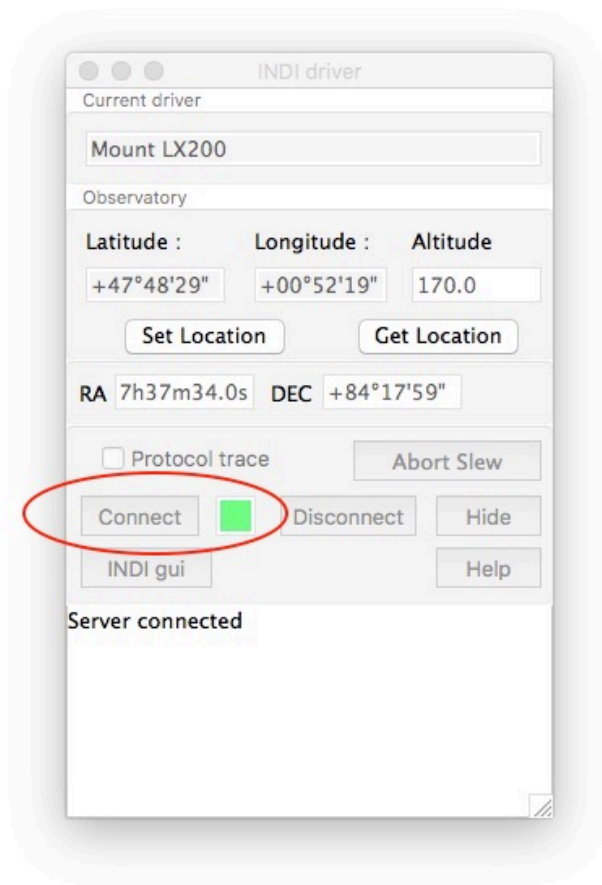
- Press Apply



- Open Telescope connection window

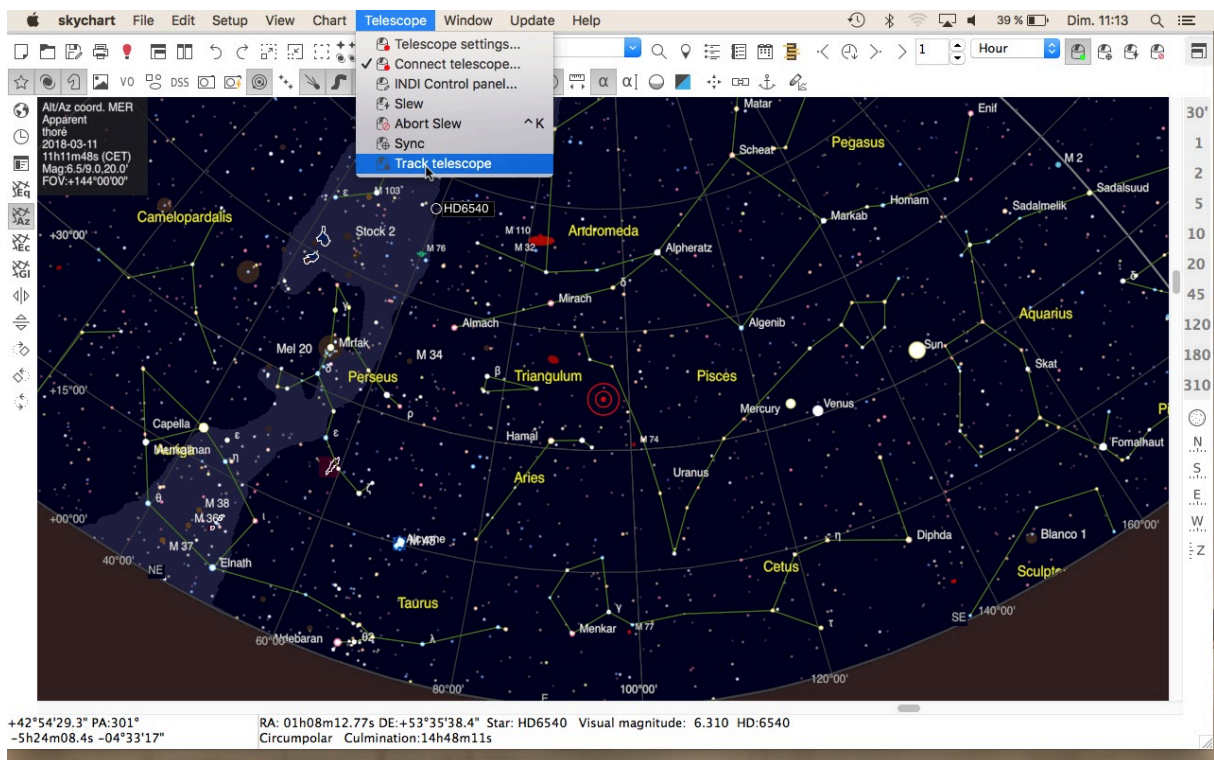


- Press “Connect” button



→ The square will become green once connected

- Track your telescope position



➔ Your screen will be now centered on your telescope position

